

# Antenna HP 12-044 D

&nbsp;Antenna HP 12-044 D



## General Specifications

|                 |                                  |
|-----------------|----------------------------------|
| Diameter        | 1.2 m                            |
| Standard Colour | RAL 7035                         |
| Shroud          | High profile                     |
| Antenna Input   | Interface for IEC waveguide R 48 |
| Polarization    | Dual                             |

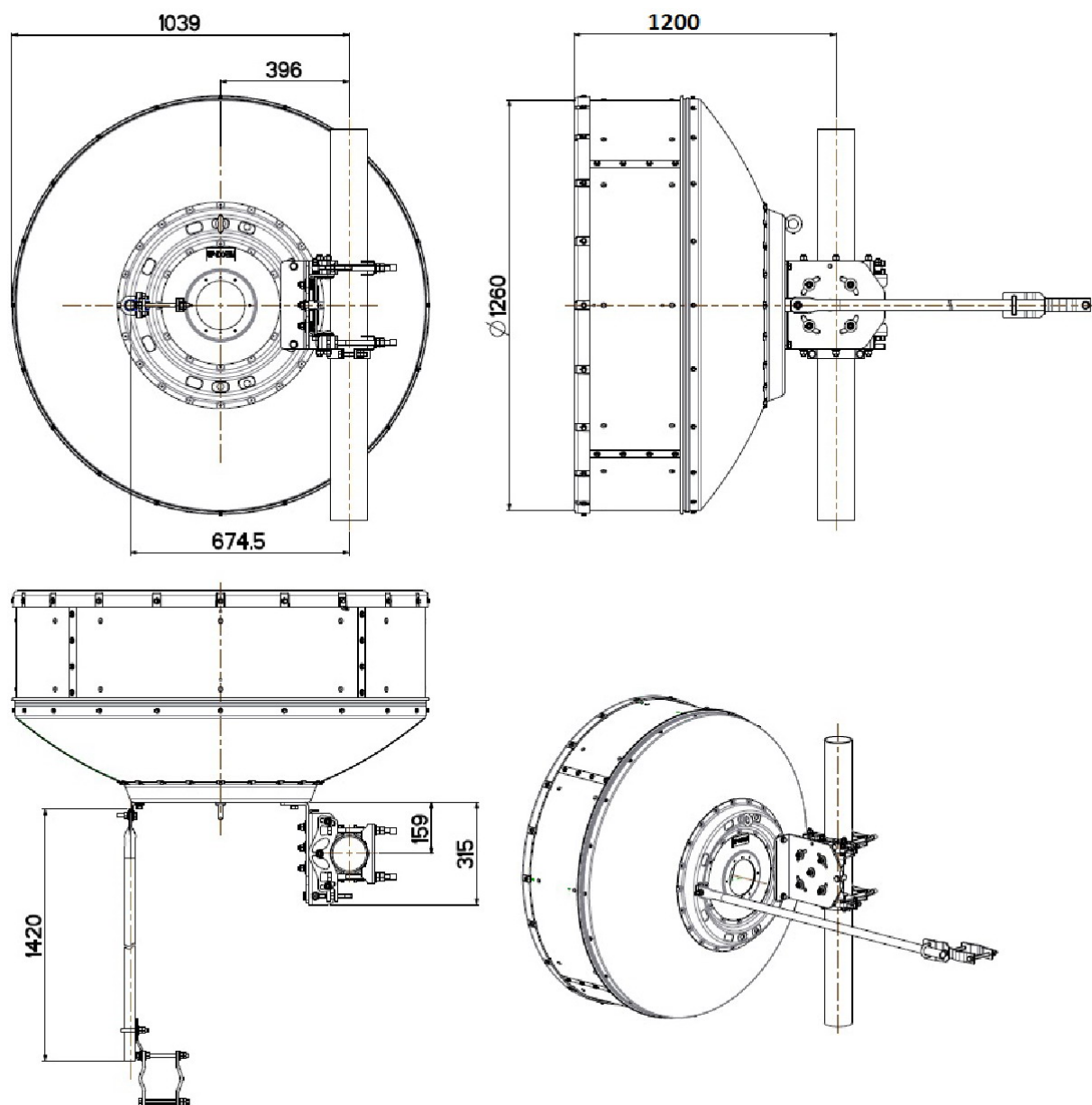
## Mechanical Characteristics

|                                  |   |
|----------------------------------|---|
| Pole                             | 115 mm  |
| Elevation-fine adjustment        | $\pm 15^\circ$  |
| Azimuth-fine adjustment          | $\pm 10^\circ$  |
| Side struts, included            | 1   |
| Side struts, optional            | 1   |
| Net weight                       | 61 Kg   |
| Radome                           | Rigid plastic   |
| Wind velocity Operational        | 45 m/s  |
| Wind velocity Survival           | 70 m/s  |
| Wind deflection                  | <0.3 times the -3 dB beamwidth                                      |
| (with a wind velocity of 45 m/s) | Specified wind deflection applies for 114 mm dia mounting pipe only |

## Antenna Dimensions

(pole mount included)

|        |           |
|--------|-----------|
| Height | 1260.0 mm |
| Width  | 1260.0 mm |
| Depth  | 1200.0 mm |



## Wind forces at wind velocity survival rating and with 25 mm (1") ice load

|                 |          |
|-----------------|----------|
| Axial force     | 5270 N   |
| Side force      | 2610 N   |
| Twisting Moment | 2110 N?m |

Maximum forces exerted on a supporting structure as a result of wind (survival rating) from the most critical direction for each parameter. These values may not occur simultaneously. All forces are referred to the mounting pipe of 115 mm diameter.

## Electrical Characteristics

|                       |           |
|-----------------------|-----------|
| Frequency range       | 4.4-5 GHz |
| Gain, low band        | 31.9 dBi  |
| Gain, mid band        | 32.5 dBi  |
| Gain, top band        | 33.4 dBi  |
| Return Loss           | 26.4 dB   |
| VSWR                  | 1.1       |
| HPBW                  | 4°        |
| Front to back ratio   | 59.0 dB   |
| Isolation             | 35.0 dB   |
| XPD                   | 30.0 dB   |
| Electrical Compliance | Class 3   |

## Shipping Information

|              |         |
|--------------|---------|
| Gross weight | 125 Kg  |
| Height       | 1140 mm |
| Depth        | 1460 mm |
| Width        | 1400 mm |

