

Antenna THP 03-142 DI

 Antenna THP 03-142 DI



▾ General Specifications

| | |
|-----------------|-----------------------------------|
| Diameter | 0.3m |
| Standard Colour | RAL 7035 |
| Shroud | Low profile |
| Antenna Input | Interface for IEC waveguide R 140 |
| Polarization | Dual |

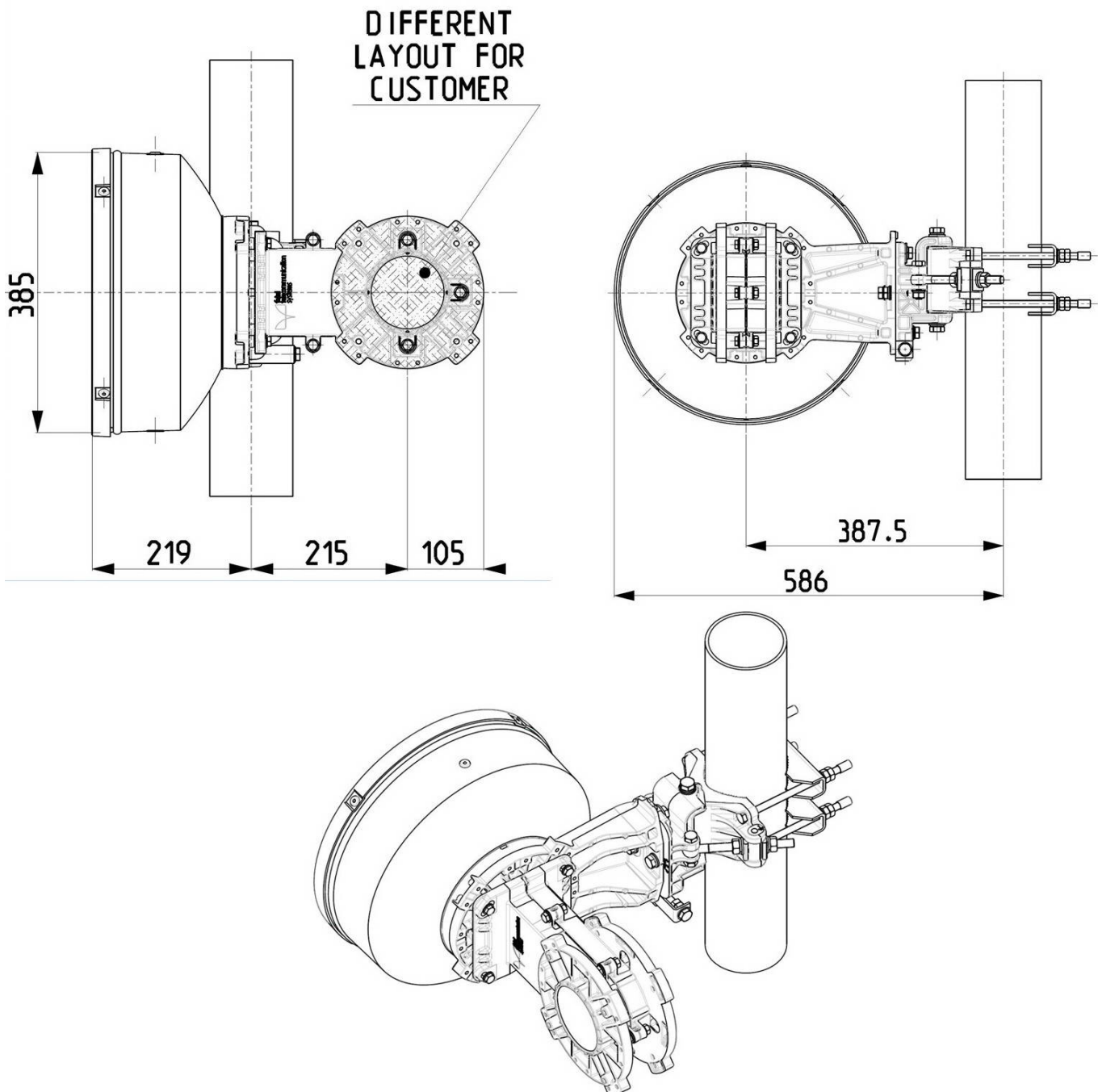
▾ Mechanical Characteristics

| | |
|----------------------------------|---|
| Pole | 50-115 mm |
| Elevation-fine adjustment | +/- 15 deg |
| Azimuth-fine adjustment | +/- 20 deg |
| Side struts, included | 0 |
| Side struts, optional | 0 |
| Net weight | 13.5 Kg |
| Radome | Rigid plastic |
| Wind velocity Operational | 45 m/s |
| Wind velocity Survival | 70 m/s |
| Wind deflection | <0.3 times the -3 dB beamwidth |
| (with a wind velocity of 45 m/s) | Specified wind deflection applies for mm dia mounting pipe only |

Antenna Dimensions

(pole mount included)

| | |
|--------|----------|
| Height | 385.0 mm |
| Width | 586.0 mm |
| Depth | 539.0 mm |



↘ Wind forces at wind velocity survival rating and with 25 mm (1") ice load

| | |
|-----------------|---------|
| Axial force | 472 N |
| Side force | 234 N |
| Twisting Moment | 167 N*m |

Maximum forces exerted on a supporting structure as a result of wind (survival rating) from the most critical direction for each parameter. These values may not occur simultaneously. All forces are referred to the mounting pipe of 115 mm diameter.

↘ Electrical Characteristics

| | |
|-----------------------|------------------|
| Frequency range | 14.2 - 15.35 GHz |
| Gain, low band | 31.4 dBi |
| Gain, mid band | 31.6 dBi |
| Gain, top band | 31.9 dBi |
| Return Loss | 17.7 dB |
| VSWR | 1.3 |
| HPBW | 4.0 deg |
| Front to back ratio | 57 dB |
| Isolation | 35 dB |
| XPD | 30 dB |
| Electrical Compliance | Class 2 |

↘ Shipping Information

| | |
|--------------|--------|
| Gross weight | 16 Kg |
| Height | 400 mm |
| Depth | 400 mm |
| Width | 600 mm |

