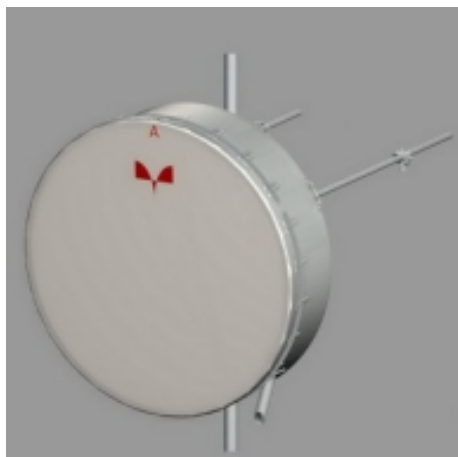


Antenna HP 30-077 D

Antenna HP 30-077 D



General Specifications

| | |
|-----------------|----------------------------------|
| Diameter | 3.0 m |
| Standard Colour | RAL 3070 |
| Shroud | Standard profile |
| Antenna Input | Interface for IEC waveguide R 84 |
| Polarization | Dual |

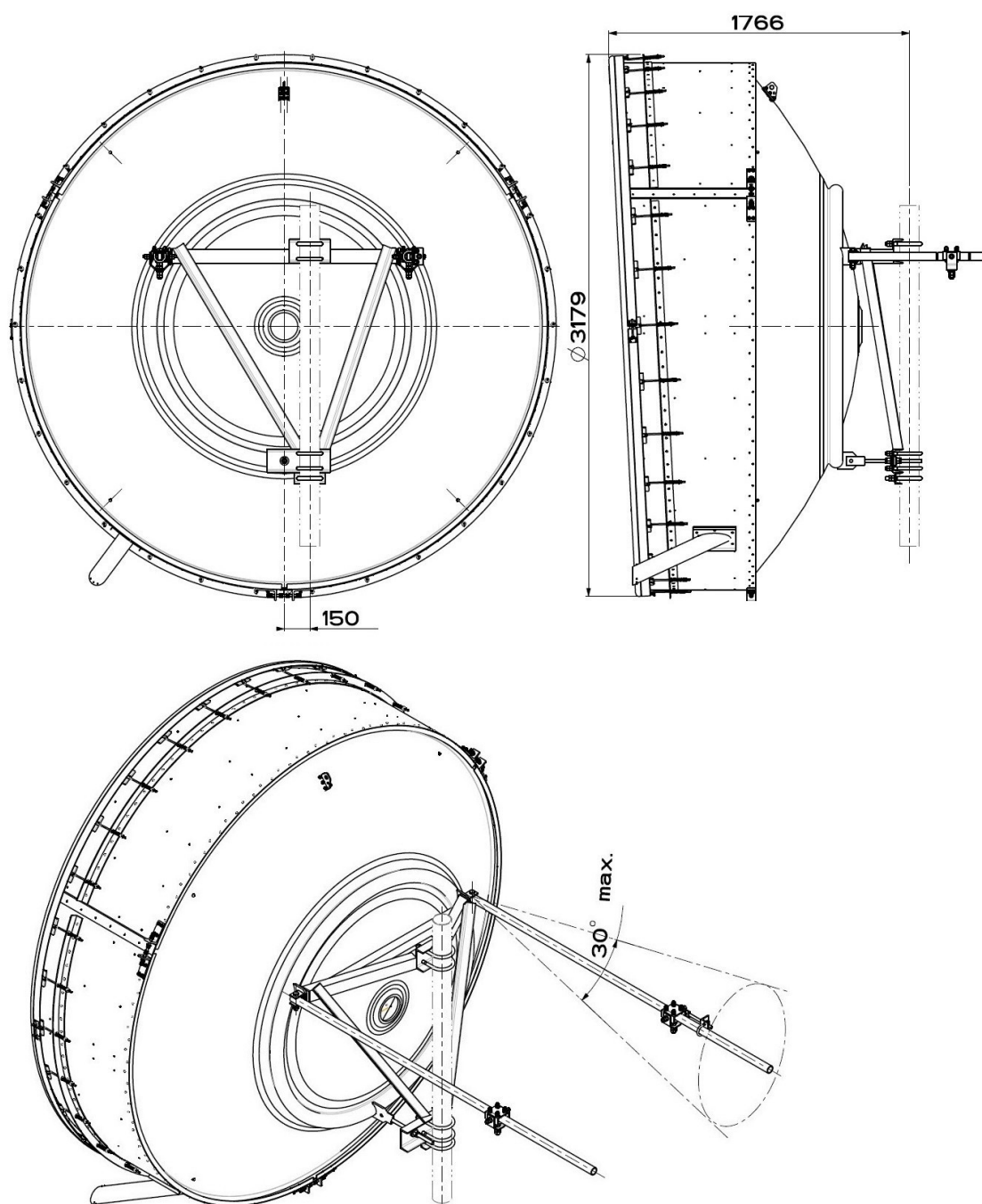
Mechanical Characteristics

| | |
|----------------------------------|---|
| Pole | 115 mm |
| Elevation-fine adjustment | $\pm 5^\circ$ |
| Azimuth-fine adjustment | $\pm 5^\circ$ |
| Side struts, included | 2 |
| Side struts, optional | 0 |
| Net weight | 360 Kg |
| Radome | Complan fabric |
| Wind velocity Operational | 30 m/s |
| Wind velocity Survival | 55 m/s |
| Wind deflection | <0.3 times the -3 dB beamwidth |
| (with a wind velocity of 30 m/s) | Specified wind deflection applies for 115 mm dia mounting pipe only |

Antenna Dimensions

(pole mount included)

| | |
|--------|---------|
| Height | 3179 mm |
| Width | 3179 mm |
| Depth | 1766 mm |



↘ Wind forces at wind velocity survival rating and with 25 mm (1") ice load

| | |
|-----------------|----------|
| Axial force | 18130 N |
| Side force | 8980 N |
| Twisting Moment | 8530 N?m |

Maximum forces exerted on a supporting structure as a result of wind (survival rating) from the most critical direction for each parameter. These values may not occur simultaneously. All forces are referenced to the mounting pipe (diameter 115 mm)

↘ Electrical Characteristics

| | |
|-----------------------|---------------|
| Frequency range | 7.750-8.5 GHz |
| Gain, low band | 44.7 dBi |
| Gain, mid band | 45.1 dBi |
| Gain, top band | 45.5 dBi |
| Return Loss | 30.7 dB |
| VSWR | 1.06 |
| HPBW | 0.83° |
| Front to back ratio | 71 dB |
| Isolation | 40 dB |
| XPD | 30 dB |
| Electrical Compliance | Class 3 |

↘ Shipping Information

| | |
|--------------|---------|
| Gross weight | 700 Kg |
| Height | 3150 mm |
| Depth | 2900 mm |
| Width | 1800 mm |

